



Fundación
Avina

FUNDACIÓN AVINA

**REDUCCION DE RIESGOS Y
DESASTRES** por causa del CC
Mecanismos de respuesta



**OBJETIVOS
DESARROLLO
SOSTENIBLE**

NYC Oct15



**NUEVA
AGENDA de
DESARROLLO**

**ACUERDO
SENDAI
UNISDR**

Marzo15

**COP 21 Y
ACUERDO DE
PARIS**

Paris Dic15

**FINANCIACIÓN
DEL DESARROLLO**

**Addis Ababa
Jul15**

Sendai Framework for Disaster Risk Reduction
2015-2030

International Federation
of Red Cross and Red Crescent Societies

The Seven Global Targets



The following is the list of seven global targets in the Sendai Framework for Disaster Risk Reduction.

Seven Global Targets in the Sendai Framework for Disaster Risk Reduction	
(a)	Substantially reduce global disaster mortality by 2030, aiming to lower the average per 100,000 global mortality rate in the decade 2020-2030 compared to the period 2005-2015;
(b)	Substantially reduce the number of affected people globally by 2030, aiming to lower the average global figure per 100,000 in the decade 2020-2030 compared to the period 2005-2015;
(c)	Reduce direct disaster economic loss in relation to global gross domestic product (GDP) by 2030;
(d)	Substantially reduce disaster damage to critical infrastructure and disruption of basic services, among them health and educational facilities, including through developing their resilience by 2030;
(e)	Substantially increase the number of countries with national and local disaster risk reduction strategies by 2020;
(f)	Substantially enhance international cooperation to developing countries through adequate and sustainable support to complement their national actions for implementation of this Framework by 2030;
(g)	Substantially increase the availability of and access to multi-hazard early warning systems and disaster risk information and assessments to the people by 2030.



Legal framework for loss and damage

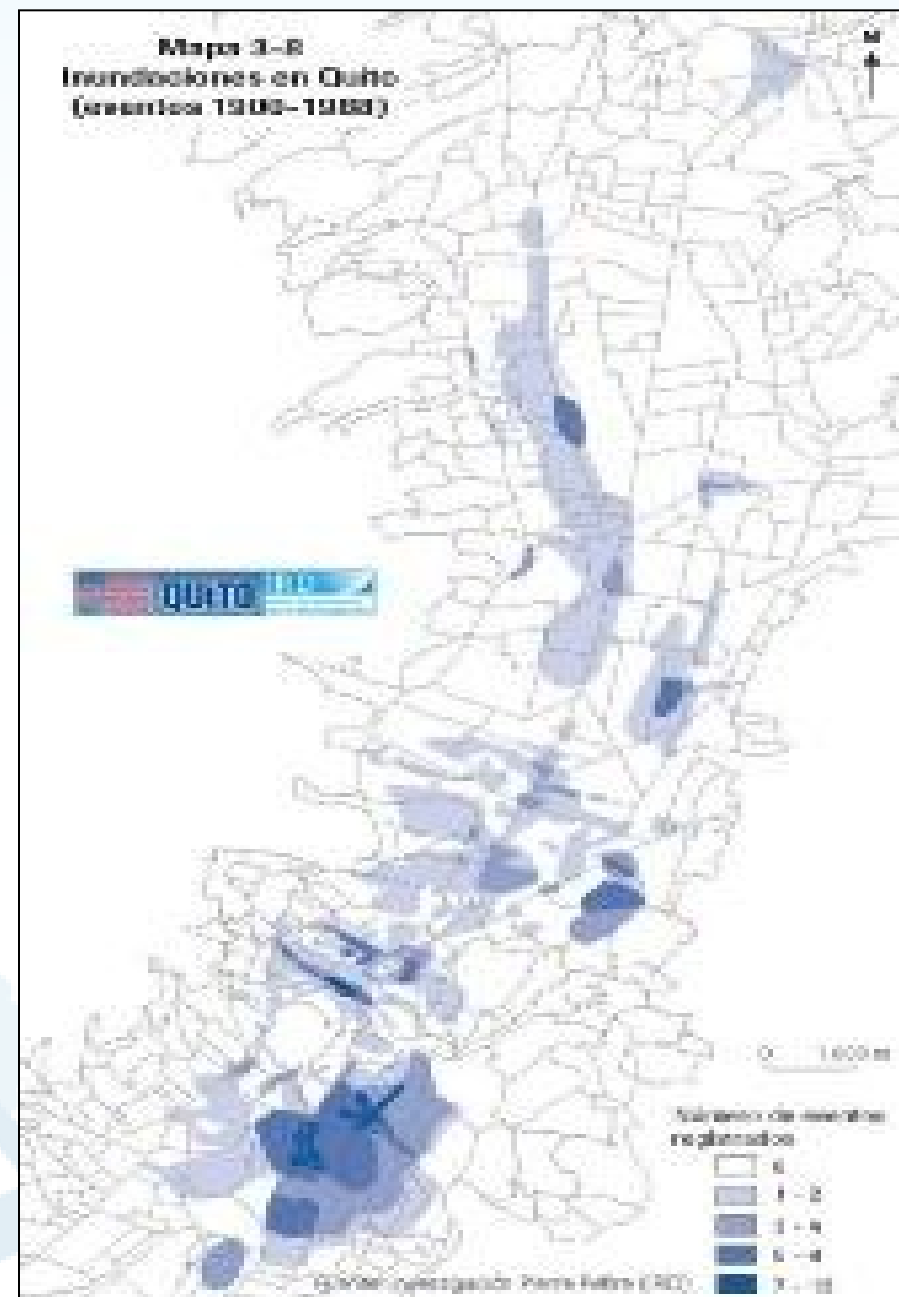
UNFCCC Article 4.8

- **funding, insurance and the transfer of technology for the adverse effects of climate change** especially on a range of loss and damage type impacts including natural disasters, desertification, low-lying coastal areas and small island countries.

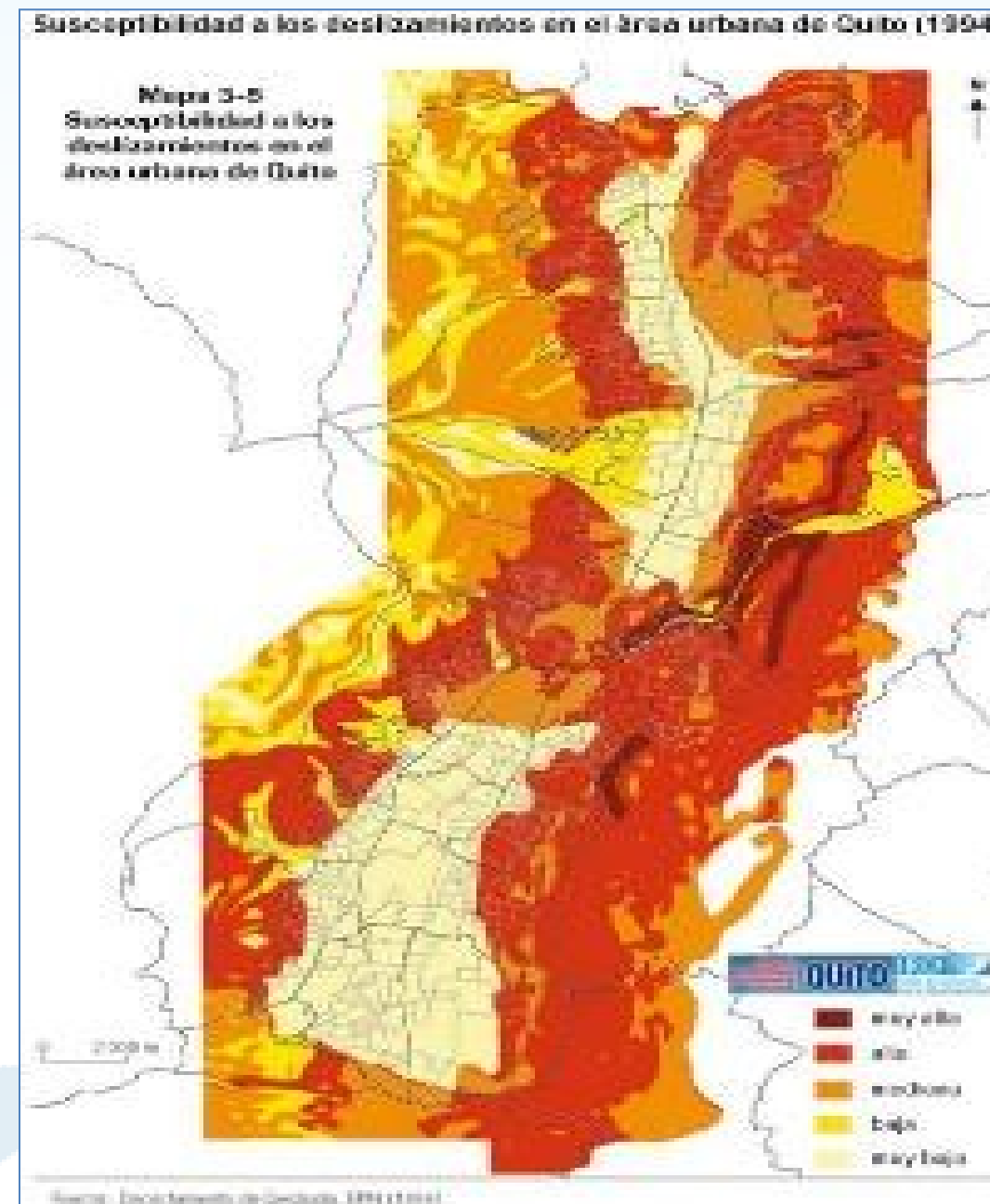
Warsaw International Mechanism on Loss & Damage

- enhance knowledge and understanding of comprehensive risk-management approaches
- strengthen dialogue, coordination
- enhance action and support, including technical support and **mobilising finance**

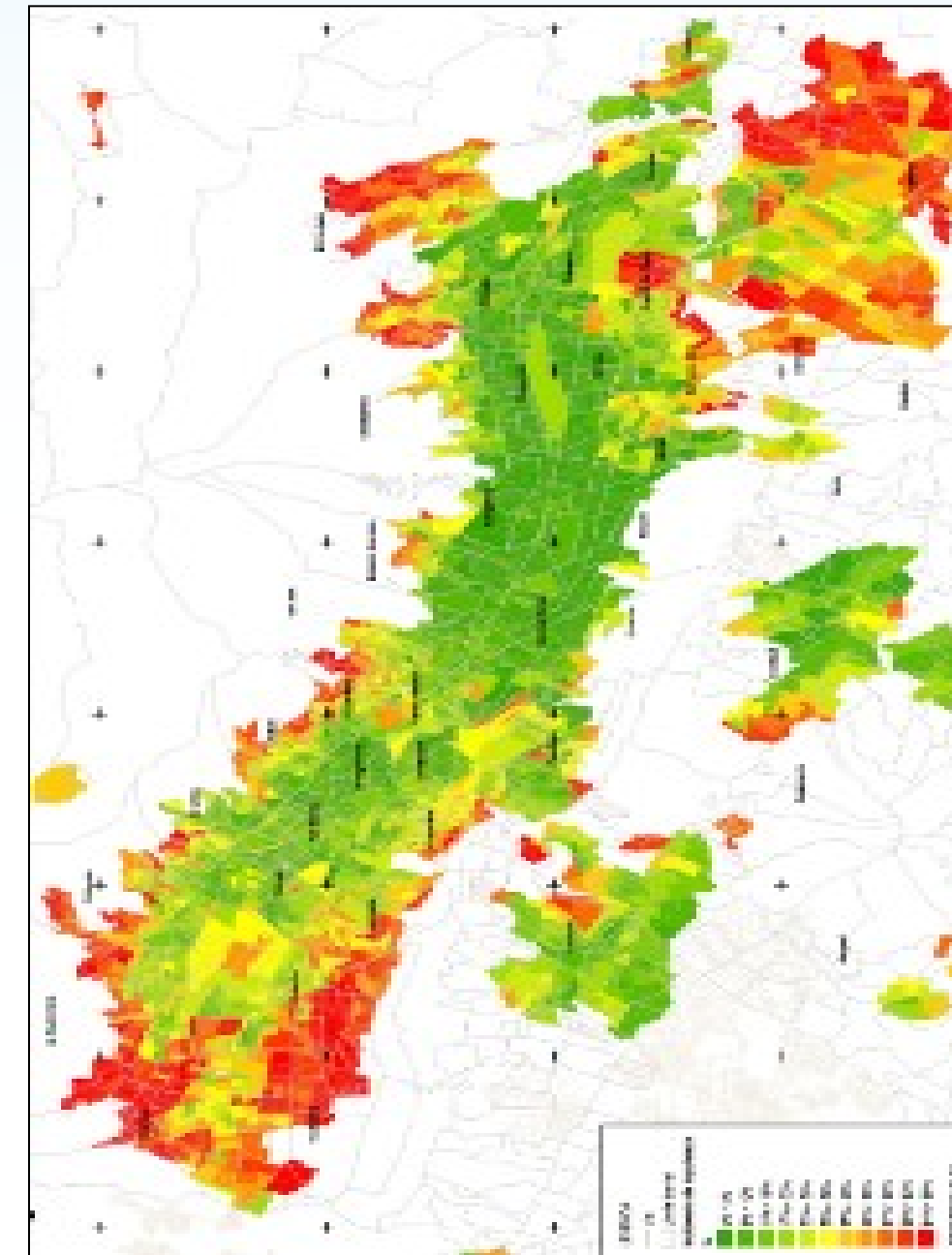
Riesgos y desastres por causa del Cambio climático



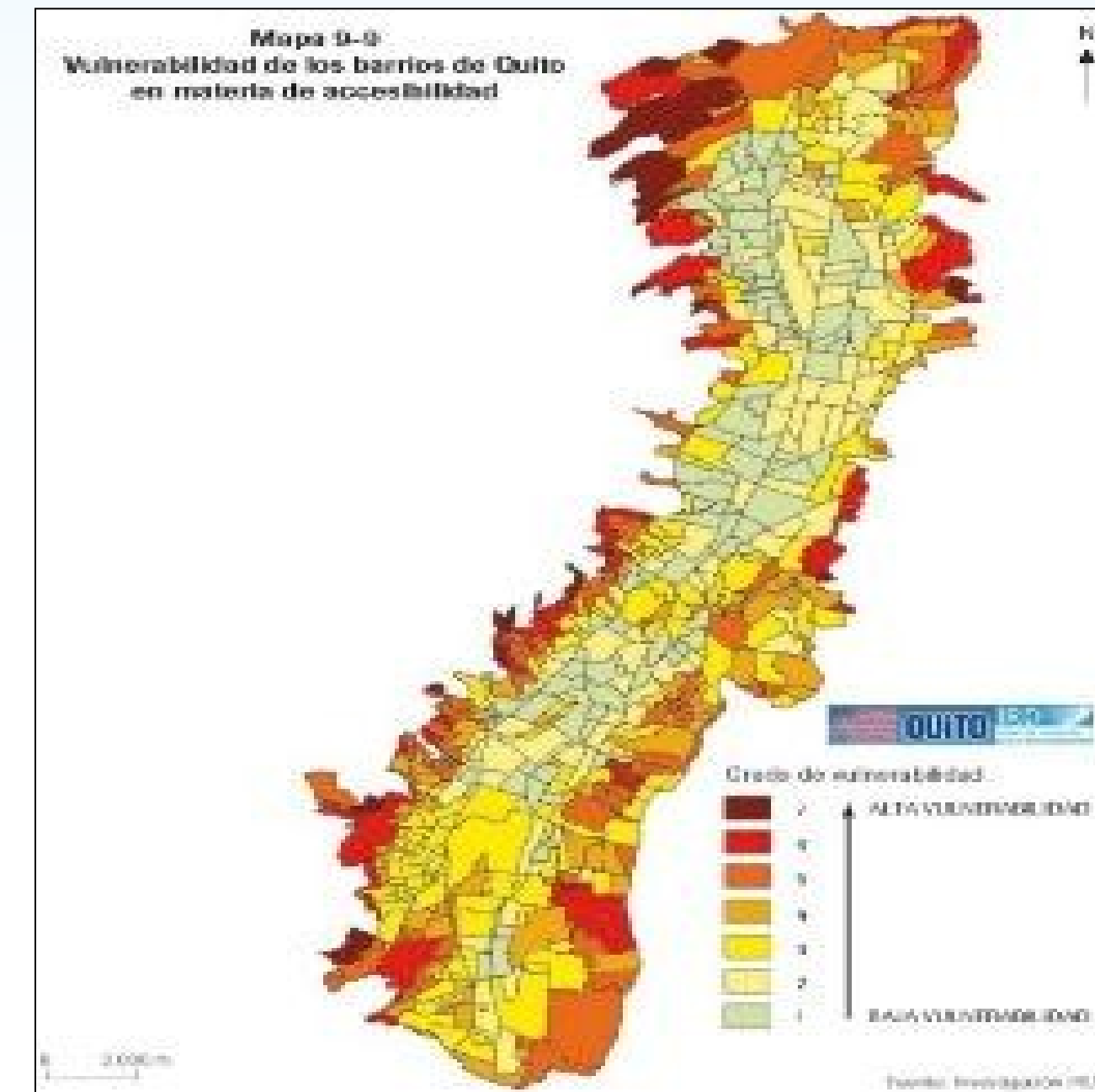
INUNDACIONES



DESLIZAMIENTOS



POBREZA



VULNERABILIDAD



80% de desastres naturales son reportados en ciudades

32% de la población vive en asentamientos irregulares (110 millones)

¿Crisis como oportunidad para el cambio?







PARTNER COMMITMENT

CREWS aims to mobilize US\$ 100 million by 2020 in order to fill the gaps in the existing bilateral and multilateral cooperation programs. A trust fund, hosted by GFDRR will support the development of implementing institutions and organizations and their activities.

Funding partners


 **France** will provide 10 million Euros over 2016 and 2017 to the multilateral trust fund.


 **Germany** intends to support CREWS with an early contribution of €3 million in 2015. France and Germany will work with G-7 partners to provide for coherence between the CREWS initiative and the G7 Insurellience initiative aiming to provide support to most vulnerable countries to access to climate risk insurance coverage and early warning on weather related risk.

 **Luxembourg** will provide 1 million euros in 2016 to the multilateral trust fund to support early warning systems in the most vulnerable countries.

 **Australia** will provide AU\$5 million specifically to the CREWS initiative to be spent over 2016 to 2020. This is in addition to more than AU\$19 million already committed over this period for bilateral support, predominantly in the Pacific region.




 **Canada** will contribute \$10 million to the World Meteorological Organization to support better early warning systems in the most vulnerable communities under the CREWS initiative.

 **The Netherlands** will contribute to the CREWS trust fund for €3 million.

Supporting partners

 **Japan** is committed to climate early warning system, and strongly supports CREWS initiative. Japan has been engaged in establishing and updating early warning systems in Asia and Pacific region including using satellite, and will continue to do so in the 2016-2020 period. Due to the budgetary cycle, Japan is unable to make quantitative commitments at this time, but will make substantive commitments in the next months ahead.


 **The United Kingdom** will partner with the CREWS initiative. Work will start immediately through co-operation and joint working with existing programmes. These include a £24 million weather information project in Africa and other relevant projects.



In poor and vulnerable countries, weather data is often unreliable or totally lacking.

CREWS is an initiative which aims to significantly increase the capacity for seamless Multi-Hazard Early Warning System (MHEWS), to generate and communicate effective impact-based early warnings, and risk information for hazardous hydro-meteorological and climate events.

Its purpose is to protect lives, livelihoods, and property in Least Developed Country (LDCs) and Small Island Developing States (SIDS).





The African Risk Capacity (ARC)

The African Risk Capacity, ARC, is a ground-breaking AU project to improve current responses to drought food security emergencies and to build capacity within AU member states to manage drought risks.

As an African-owned, continental index-based weather risk insurance pool and early response mechanism, ARC offers an African solution to one of the continent's most pressing challenges.

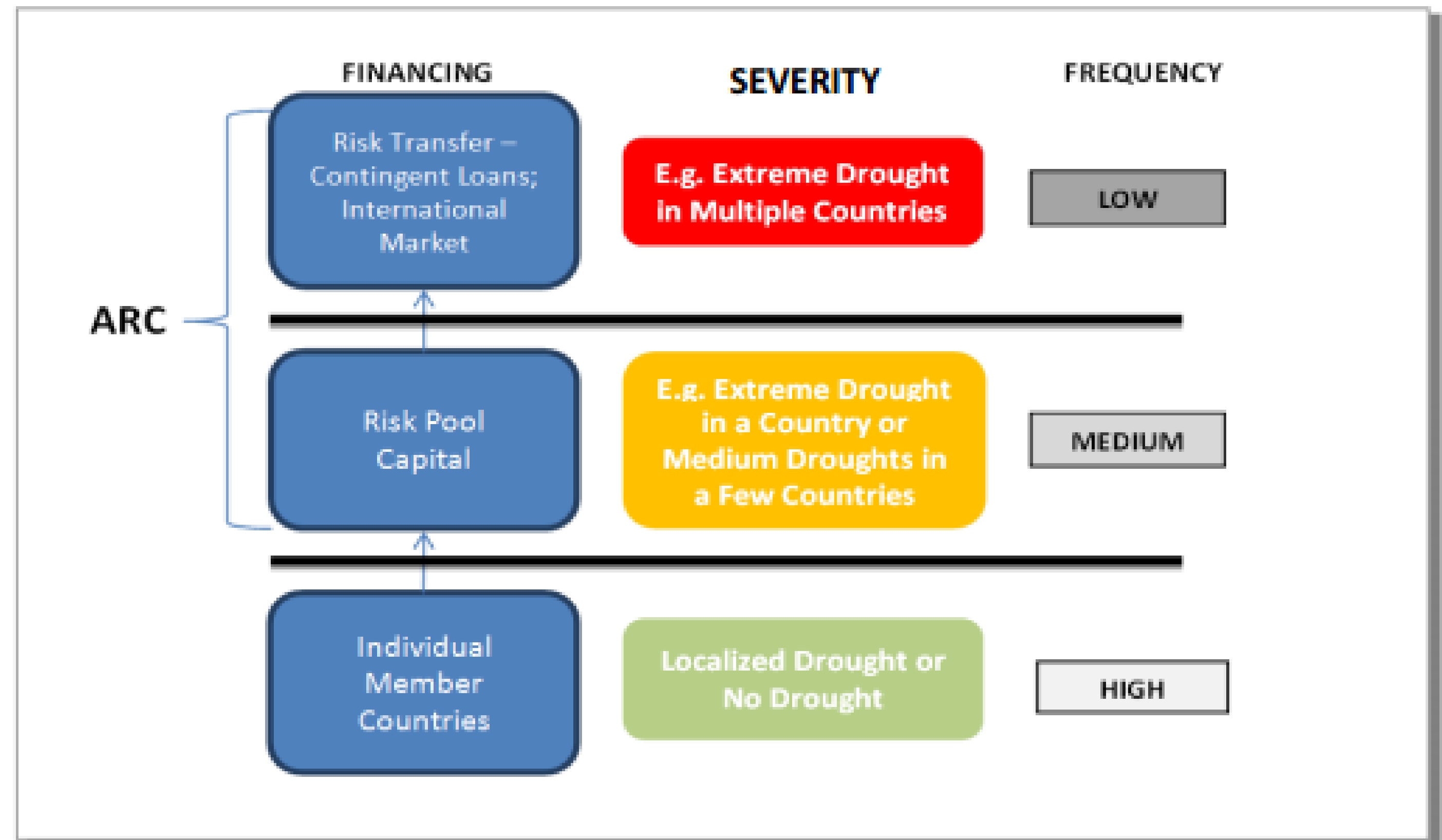


Figure 2. Simplified Graphical Illustration of a Possible ARC Risk Transfer Structure for a Single Year Highlighting a Layered Risk Management Approach



Update on El Niño G7 Climate Risk Insurance Initiative



- G7 decided to support people in developing countries to protect themselves against economic consequences of more intense and frequent extreme weather events
- Target: extra 400 million people earning less than US\$ 2 per day get access to direct (100 m) or indirect (300 m) insurance of losses caused by weather extremes
- German Government already pledged € 150 million for first two project years with option of more to follow later
- Munich Re has been involved w/German government in preparation of G7 initiative: directly with in house geo risks research expertise and indirectly by Munich Climate Insurance Initiative (MCII)
- CRII has high potential to become milestone on climate change adaptation and resilience for poor countries.





Alianza trinacional:

- sociedad civil organizada,
- sector privado,
- gobiernos locales

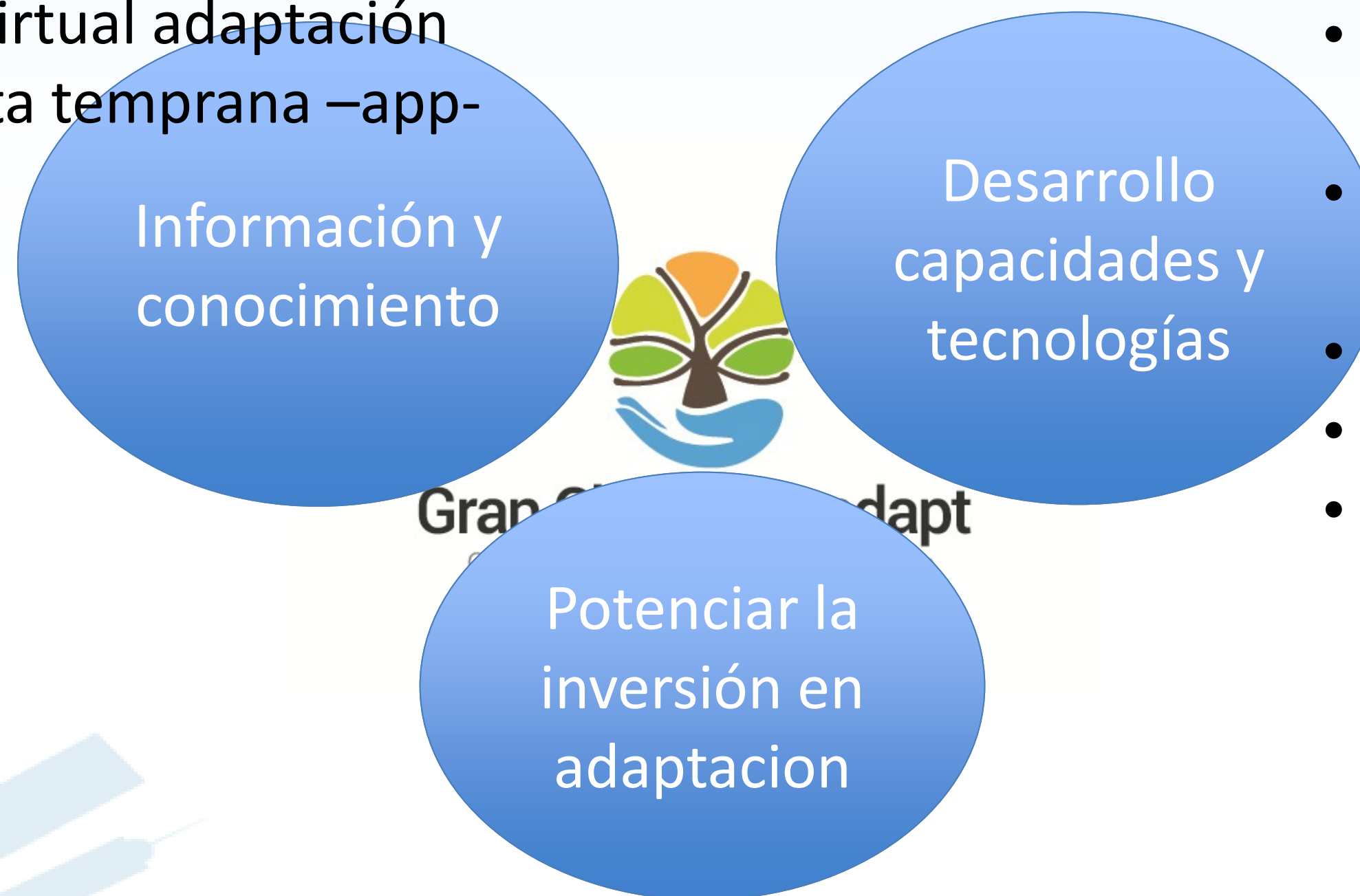
“contribuir en la capacidad adaptativa y a una mayor resiliencia de pequeños productores del Gran Chaco Americano”

Componentes:

1. Generación de Información y la Gestión del Conocimiento
2. Desarrollo capacidades y tecnologías adaptativas de cadenas de valor
3. Potenciar la inversión adaptativa

Gran Chaco Proadapt

- 20 estaciones meteorológicas integradas
- 10 instituciones presentando datos
- Plataforma virtual adaptación
- Sistema alerta temprana –app-



- 10 modelos de negocios resilientes sistematizados
- 45 org de productores c nuevas prácticas
- 10 inst I+D trabajando tecnologías adaptativas
- 2 pilotos demostrativos
- Organizaciones de mujeres
- Gobiernos locales empoderados

- Planes adaptativos sectoriales en ganadería bovina y apicultura
- 8 modelos de negocios con planes de adaptación
- 12 Municipios con Planes de adaptación en cadenas de valor
- 20 agencias que incorporan políticas de adaptación y promueven inversión
- Instituciones financieras que incorporan riesgo climático en su política crediticia



innovación



Innovación ante la gestión de daños



Henk Ovník – Embajador del Agua

REBUILD BY DESIGN: 2 YEARS LATER

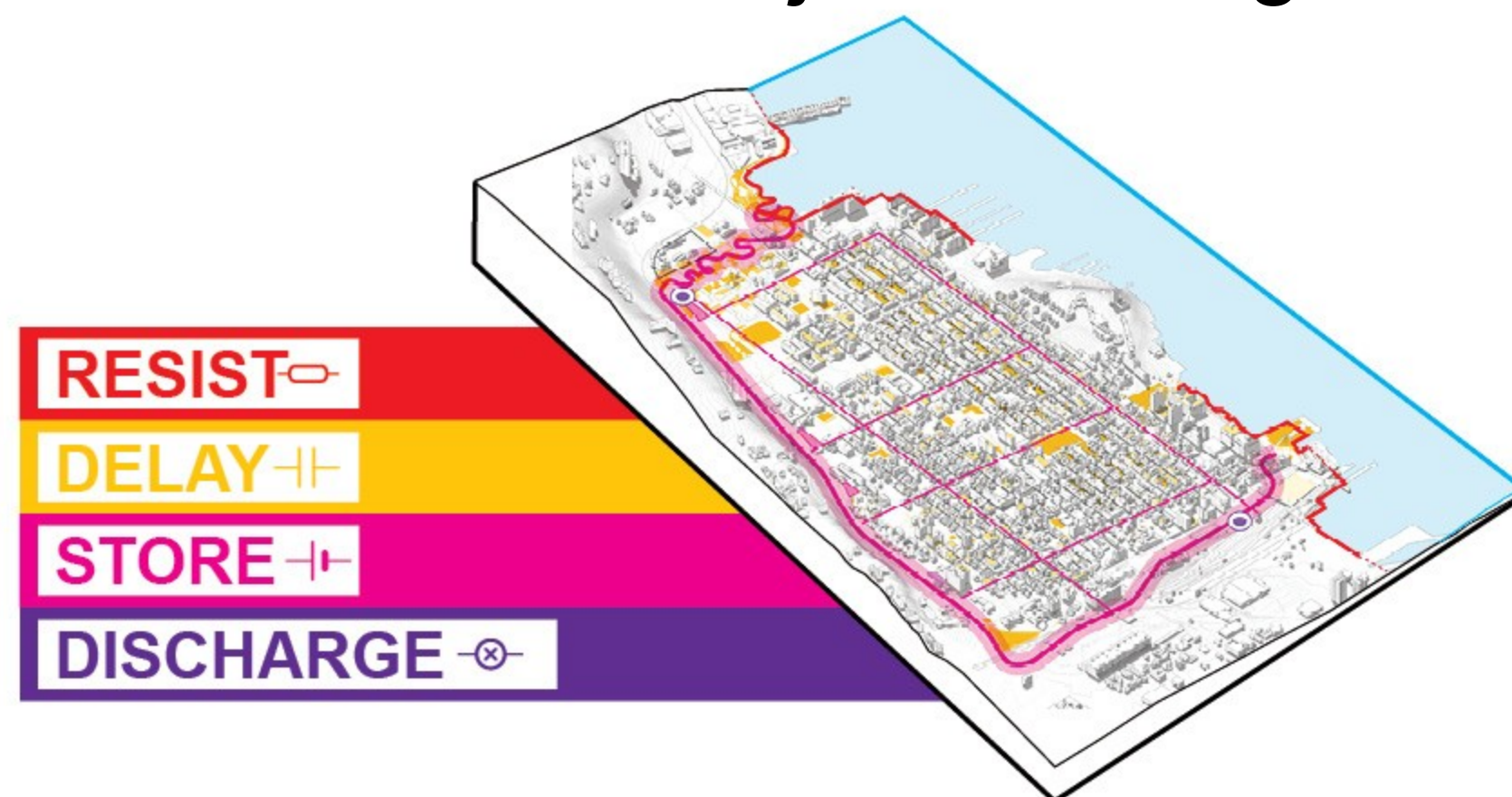
A collage of images showing people at a conference or meeting. Some are sitting at a table, others are standing and talking. A sign in the background says "2 YEARS LATE".

LEARN ABOUT THE PROJECT UPDATES

RETHINKING RESILIENCE

A photograph showing several houses that have been severely damaged or destroyed, with debris scattered around them.

New Meadowlands, June Update



www.rebuildbydesign.org



[Approach](#)

[Challenge](#)

[Water Window](#)

[Teams](#)

[Projects Map](#)

[News](#)

Flooding:

A real and present danger. 47% of all weather-related disasters are due to flooding alone.

The Global Resilience Challenge will provide up to \$US 1 million to realize innovative solutions affecting flood prone communities across the Sahel, the Horn of Africa and South and South-East Asia.



Reconstruyamos Dolores



15 de Abril 2016 – Tornado

LA CIUDAD DE DOLORES DESTRUIDA EN UN 40%



EL 15 DE ABRIL DE 2016, DOLORES (DPTO. DE SORIANO) SUFRIÓ LA MAYOR CATÁSTROFE AMBIENTAL DEL URUGUAY

VELOCIDAD DEL VIENTO: 250 a 300 km/h
ESCALA FUJITA: F3
DURACIÓN DEL TORNADO: 3 minutos

DE LAS 6.196 VIVIENDAS QUE TENÍA LA CIUDAD EN SU TOTALIDAD, 2.200 SE VIERON AFECTADAS



LOS ÚNICOS 2 LICEOS QUEDARON DESTRUIDOS Y 4 ESCUELAS CON DAÑOS

2400 ALUMNOS SIN LUGAR DONDE ESTUDIAR

EL HOSPITAL QUEDÓ CON PELIGRO DE DERRUMBE E INUNDADO

UNA CIUDAD CON 20.000 HABITANTES

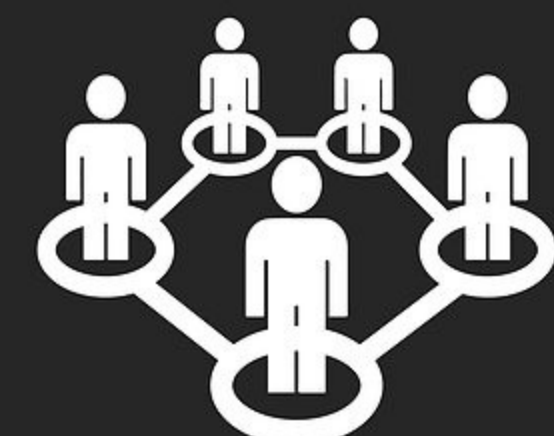
- 7.000 VÍCTIMAS
- 5 VÍCTIMAS FATALES
- 800 PERSONAS GRAVES
- 400 HOSPITALIZADOS EL DÍA DE LA CATÁSTROFE
- 90 HOSPITALIZADOS POR DÍA POR TRABAJOS DE RECUPERACIÓN Y CRISIS POST-TRAUMÁTICA

MÁS DE 200 VEHÍCULOS DAÑADOS O DESTRUIDOS

LA ECONOMÍA DE LA CIUDAD PARALIZADA, CON MÁS DE 100 COMERCIANTES DAMNIFICADOS

SE ESTIMAN U\$S 100 MILLONES PARA REPARAR LOS DAÑOS DIRECTOS SIN CONTEMPLAR LOS DAÑOS INDIRECTOS POR LA ECONOMÍA PARALIZADA

SIN LUZ
SIN SEÑAL DE CELULARES NI TELEFONÍA FIJA
AISLADA DE LA CAPITAL POR EL CORTE DE RUTAS DEBIDO A LAS INUNDACIONES



LA SOCIEDAD CIVIL COMIENZA A AUTO-ORGANIZARSE COMO PUEDE Y A RECIBIR CIENTO DE MILES DE DONACIONES

LOS VECINOS SE AYUDAN UNOS A LOS OTROS Y A REPARTIRSE MÁS DE 3.000 VIANDAS DIARIAS

VOLUNTARIOS DE TODAS PARTES DEL PAÍS Y DEL EXTERIOR SE ACERCAN PARA AYUDAR EN LO QUE SE PUEDA



LA NOTICIA SE HACE ECO EN LOS MEDIOS LOCALES E INTERNACIONALES, TRASCENDIENDO FRONTERAS



Más de 30 acciones ejecutadas para la Reconstrucción de Dolores

July 21, 2016



La Asociación Civil por la Reconstrucción de Dolores, Asociación que se creó luego del terrible tornado que azotó la Ciudad, integrada por la Asociación Agropecuaria de Dolores, la Liga Comercial e Industrial de Dolores, grupos de profesionales,

5k y 10k Dolores - Recorridos

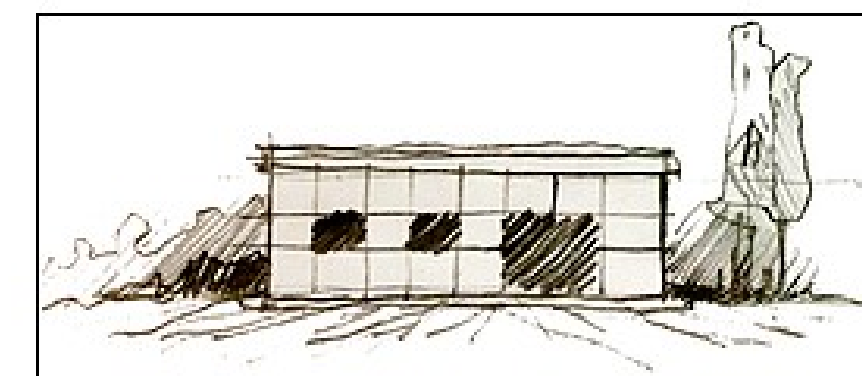
July 5, 2016



Por más información:
095 750 070 (Romina)
099 531 467 (Pablo)

UNIDAD HABITACIONAL DOLORES

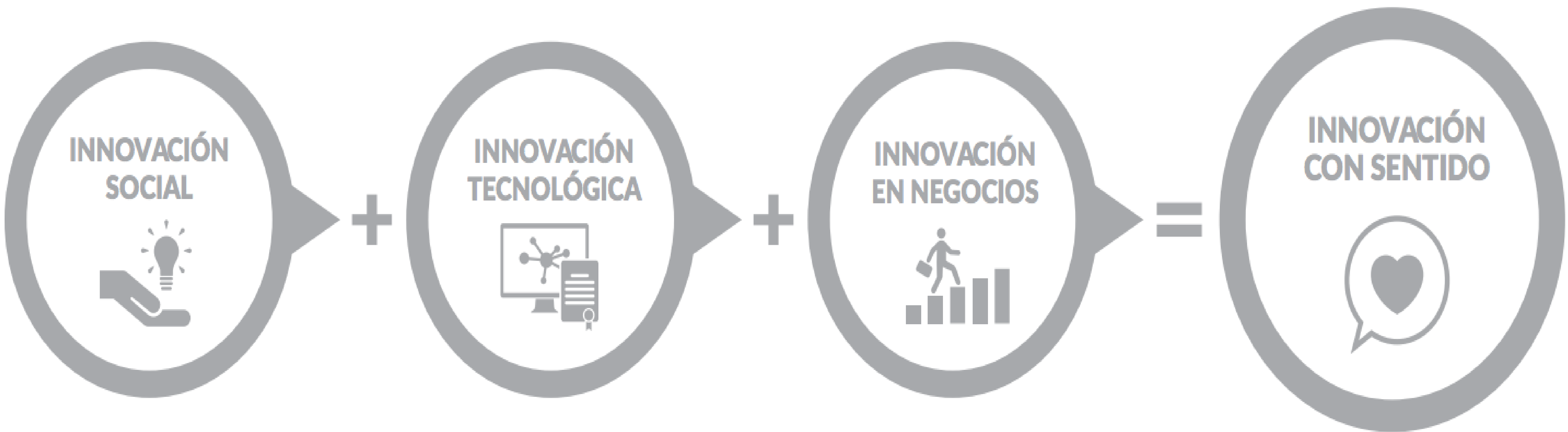
June 9, 2016 | Grupo Arquitectos ACRD



A partir del tornado del 15 de abril pasado, entendiendo que en situación de emergencia el intercambio de ideas y la diversidad de enfoques se vuelve necesario y enriquecedor, un grupo de arquitectos de la ciudad de Dolores hemos comenzado a trabajar, buscando desde nu...

- *Resurgir más fuertes después de momentos difíciles y vivir mejor en los buenos momentos*
 - Permite **mejorar** los sistemas y condiciones actuales
 - **Oportunidad de construir nuevas relaciones, asumir nuevas iniciativas y esfuerzos, abrirse a nuevas oportunidades y tener un impacto no imaginado antes**

Innovación para la Resiliencia



Gracias

Ramiro.fernandez@avina.net

